

Hill 'N Dale Clay Shoot



Lucy Idol Golf Outing



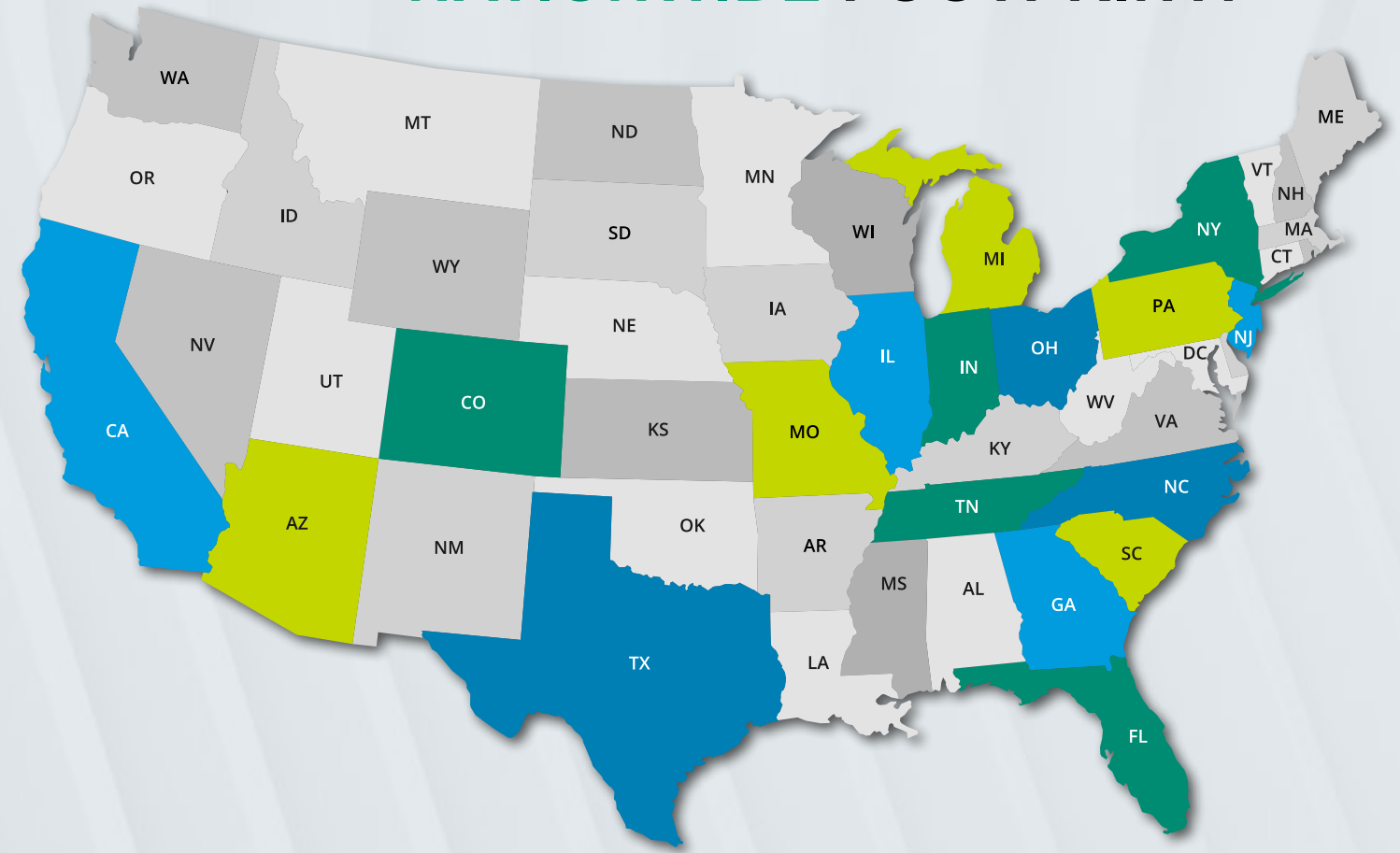
IRE Executive Breakfast

2022

YEAR IN REVIEW

KEY ACCOMPLISHMENTS

GMS NOW OFFERS A
NATIONWIDE FOOTPRINT!



RETURNED
\$64M+
TO 231 CLIENTS VIA THE
EMPLOYEE RETENTION
TAX CREDIT
PROGRAM

IMPLEMENTED
20
QUALITY
ASSURANCE
PROCESSES

450+
HOURS
VOLUNTEERED

650+
NEW CLIENTS

10
NEW
OFFICES

1
ACQUISITION

**SOC 1
TYPE 1**
CERTIFICATION
EXPANDED TO
ALL GMS
DIVISIONS

AWARDS



PRODUCT LAUNCHES



TELEMEDICINE

Telemedicine is an integrated care system that empowers whole-person health, from wellness and prevention, to acute care or complex needs.



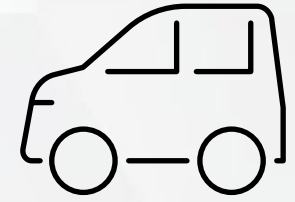
H-2B VISA PROGRAM

The H-2B Visa program allows employers to hire foreign workers to the U.S. and perform nonagricultural services or labor on a temporary basis.



METABOLIC WELLNESS

Your employees are provided with an effective, science-based program that will enable you to achieve healthy weight loss.



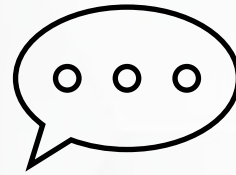
FLEET MANAGEMENT

This allows companies to organize and coordinate work vehicles to improve efficiency, reduce costs, and monitor unsafe driving habits.



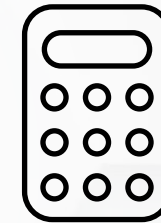
DIABETIC MANAGEMENT

Diabetic management helps employers and their employees transform their health, change lives, and create new opportunities.



SPANISH ONBOARDING

GMS Connect now offers a Spanish option making it easier for your new hires to overcome language barriers.



EXPENSE MANAGEMENT

By using our system, companies now have the capability to streamline tracking expenses for both the employer and employees.



CANNABIS 401(K) PLAN

Smaller businesses that have found the cost of offering a 401(k) plan to be onerous now have a new cost-effective option.



LEARNING MANAGEMENT SYSTEM (LMS)

Our LMS offers employees a scalable, personalized, e-learning experience to help employees stay engaged and develop professionally.



WORKPLACE NOISE MONITORING

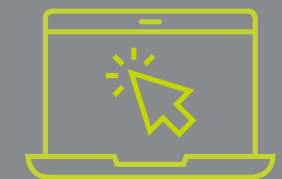
If you feel your workplace is too loud, you can request GMS safety experts to come on-site and evaluate the noise level.



PERFORMANCE MANAGEMENT

Your business can now track manager and employee reviews, set team and employee goals, and solicit feedback in the system.

INTERESTED IN LEARNING MORE ABOUT THESE PRODUCT OFFERINGS?



Visit us at groupmgmt.com

CLIENT TESTIMONIALS



I have to honestly say I've worked here for 14 years. This is literally the first time I've ever (I mean ever) gotten the G/L information done so efficiently within the week. This process has in the past taken me months to communicate our needs.



Since working with GMS, we have successfully been able to establish a new hire onboarding process and create a company handbook. GMS has also made offering an employee benefits program very easy for us.



Everything is under one roof when you partner with GMS. Whenever I have a question or concern, I know exactly who to call, as there's only one point of contact. There's no more 1-800 number. GMS is a company that can help you and your business be more competitive. I honestly can't think of a reason not to partner with GMS.



Having GMS administer our payroll, healthcare, workers' compensation, benefits, and assisting with human resources management has enabled us to focus our own resources on our core business of making quality aluminum extrusions. The contacts that I use at GMS are knowledgeable, professional, and provide accurate information in a timely manner.



GMS has saved us money and provided other services our larger provider didn't offer competitively for a small business.



I love GMS and they are easy to work with. They provide turn-key support to the major functions of a business, all while saving the client money.

THANK YOU



2022 was another exciting year at GMS. We welcomed hundreds of new clients, launched a variety of new products, and expanded into many new markets. On behalf of everyone at GMS, thank you for another amazing year. We have enjoyed our partnership and look forward to continued success together in 2023. Happy New Year!

– Stacey Larotonda
Vice President Of Client Services

